

EXT. DOOR SCHEDULE

STR. OPENING SIZES SHOWN

REF	SIZE(WxH)/NOTES
1	1030x2100 (PART M ACCESS & OBSCURE GLAZED)
2	1810x2100 (MIN 850mm CLEAR LEAF & SAFETY GLAZING)

REFER TO ELEVATIONS FOR DOOR STYLES.

INT. DOOR SCHEDULE

DOOR LEAF SIZES SHOWN

REF	SIZE(WxH)/NOTES
3	838x1981
4	762x1981
5	838x1981
6	838x1981
7	762x1981
8	762x1981
9	762x1981
10	762x1981
11	762x1981
12	762x1981
13	762x9181

DOOR STYLES TO CLIENT SELECTION.

WINDOW SCHEDULE

DOOR LEAF SIZES SHOWN

REF	SIZE(WxH)/NOTES
1	1585x1050
2	630x1050 (OBSCURE)
3	685x1200
4	1248x1200
5	1810x1050
6	1585x1200 (FIRE ESCAPE)
7	630x1050 (OBSCURE)
8	910x1200 (FIXED)
9	1248x1200 (FIRE ESCAPE)
10	1248x1200 (FIRE ESCAPE)
11	910x1200
12	630x1200

REFER TO ELEVATIONS FOR OPENINGS AND WINDOW STYLES.

LEGEND/NOTES:

	BRICKWORK
	NON-LOADBEARING BLOCKWORK
	LOAD-BEARING BLOCKWORK
	INSULATED STUDWORK PARTITION
	BEAM/LINTEL/TRIMMER/GIRDER TRUSS OVER
	DENOTES SPAN OF BEAM & BLOCK FLOOR BELOW
	DENOTES SPAN OF ROOF TRUSSES ABOVE
	CONSUMER UNIT
	SMOKE DETECTOR (PRECISE LOCATION TO BE DETERMINED BY M&E DESIGN)
	HEAT DETECTOR (PRECISE LOCATION TO BE DETERMINED BY M&E DESIGN)
	MECHANICAL EXTRACT FAN (PRECISE LOCATION TO BE DETERMINED BY M&E DESIGN)
	AIR SOURCE HEAT PUMP LOCATION
	DIRECT DRAINAGE POINT
	SOIL AND VENT PIPE
	FLOOR SOCKET
	DRAINAGE WASTE PIPES
	PLY LINED PARTITION
	SECTION LOCATION MARKS
	DOOR REFERENCE
	WINDOW REFERENCE

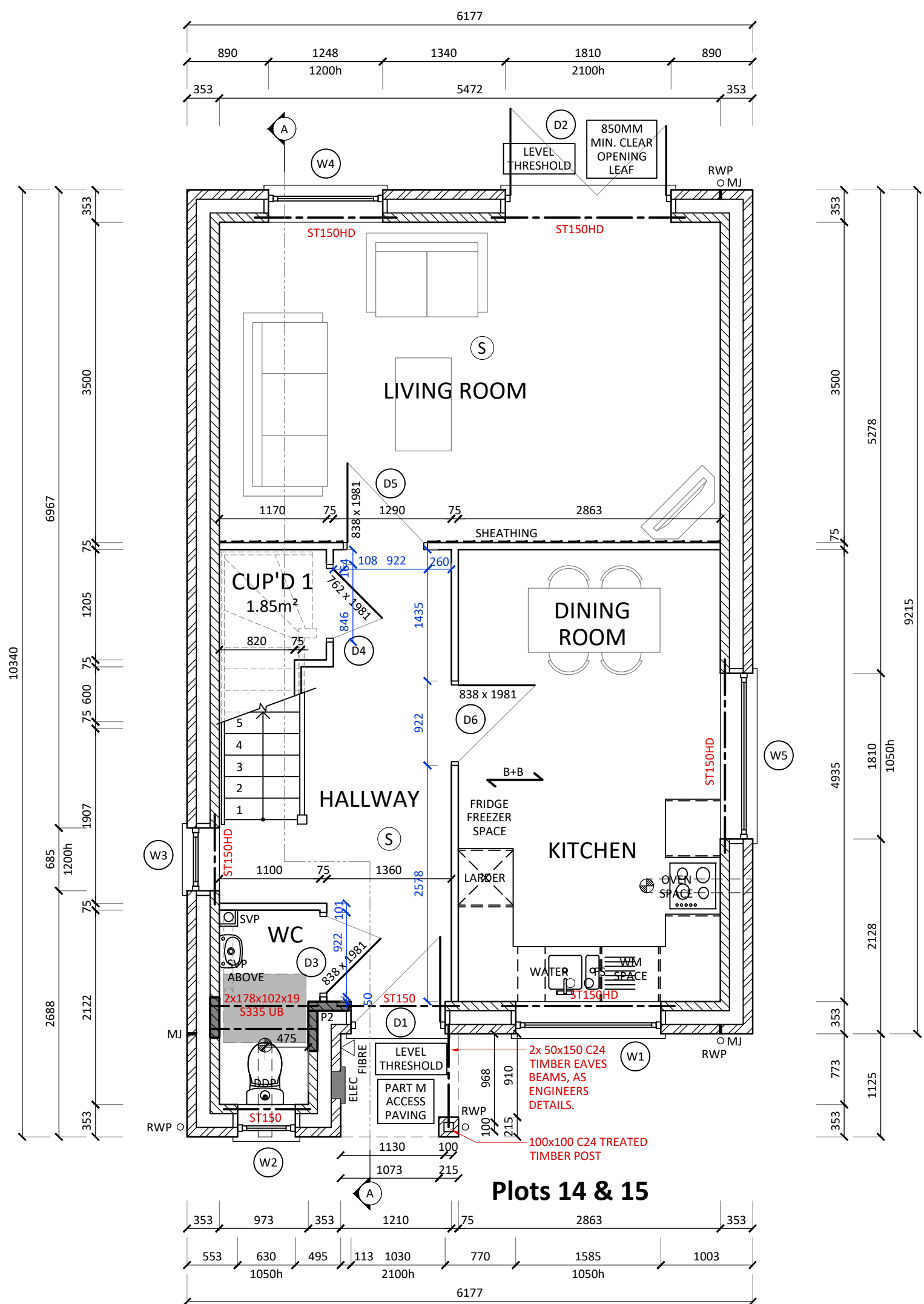
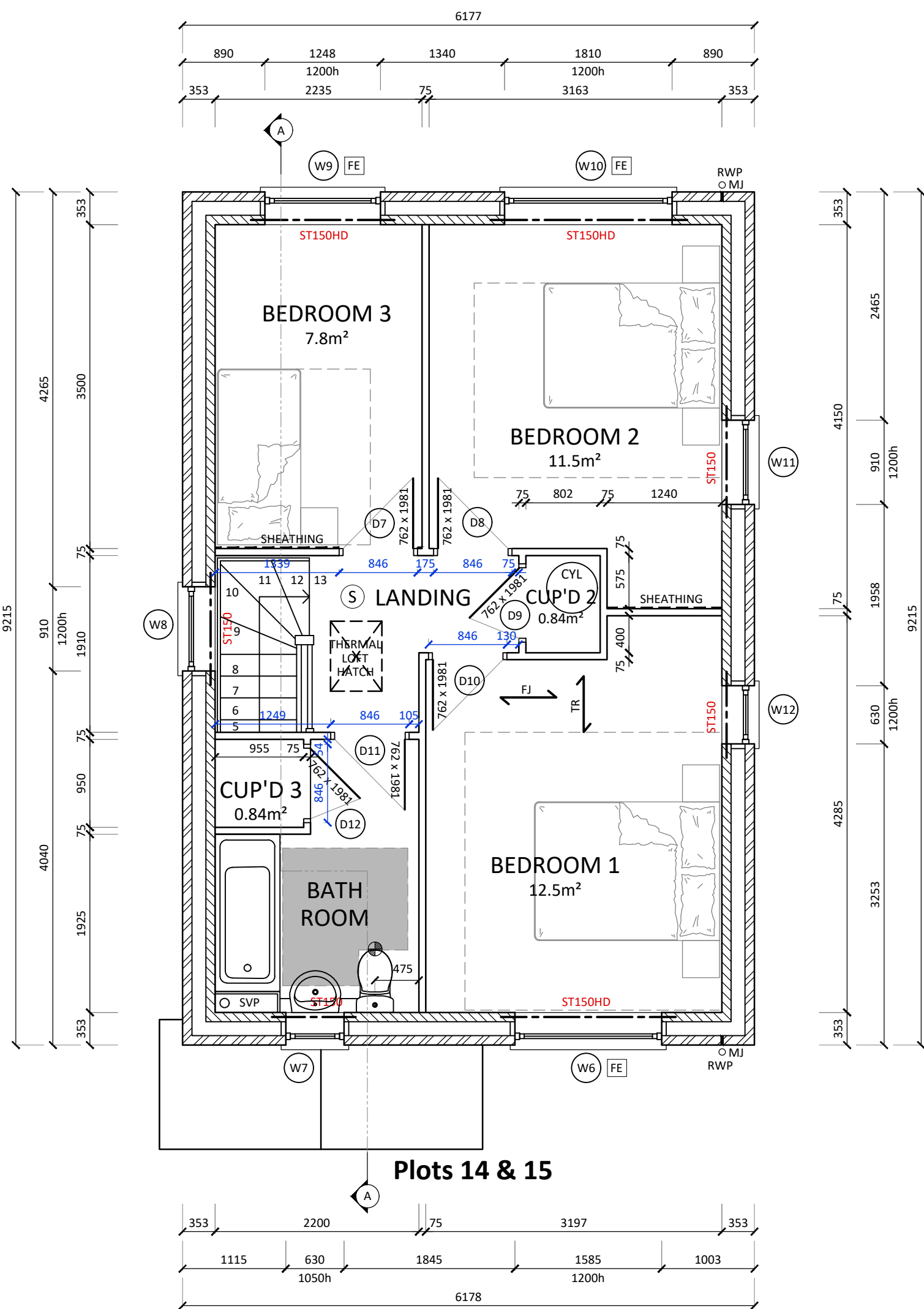
- ALL DIMENSIONS ARE GIVEN IN MILLIMETRES UNLESS OTHERWISE NOTED. DO NOT SCALE FROM THESE DRAWINGS, WORK FROM FIGURED DIMENSIONS ONLY.
- ALL DIMENSIONS ARE TO BE CHECKED ON SITE BY THE CONTRACTOR/FABRICATOR PRIOR TO COMMENCEMENT OF CONSTRUCTION/FABRICATION.
- DRAWINGS TO BE READ IN CONJUNCTION WITH 'SUPPLEMENTARY NOTES REGARDING BUILDING REGULATIONS'.
- DRAWINGS TO BE READ IN CONJUNCTION WITH STRUCTURAL ENGINEERS DESIGN AND SPECIFICATION.
- ANY DISCREPANCIES IN DIMENSIONS OR NOTES ARE TO BE REPORTED TO THE ARCHITECT, ALSO PRIOR TO COMMENCEMENT OF CONSTRUCTION/FABRICATION.
- WHEN APPLICABLE REFER TO LARGE SCALE DRAWINGS AND SPECIFICATION OF MATERIALS AND WORKMANSHIP.

STRUCTURAL DESIGN NOTES:

- REFER TO STRUCTURAL DESIGN BY 'ROSSILONG' FOR FULL DETAILS (REF: 231278_S-117_P04) DATED 25/06/2024.
- ALL BLOCKWORK IS TO BE MINIMUM 3.6N/mm² COMPRESSIVE STRENGTH UNLESS NOTED OTHERWISE.
- ALL CAVITY WALLS ARE TO HAVE STAINLESS STEEL WALL TIES AT 900mm CENTRES HORIZONTALLY AND 450mm CENTRES VERTICALLY. TIES ARE TO BE AT 225mm CENTRES VERTICALLY ADJACENT TO ALL OPENINGS AND MOVEMENT JOINTS.
- ALL LINTELS BY BIRTLEY UNO AND ARE TO HAVE A MINIMUM OF 150mm END BEARINGS.
- LATERAL RESTRAINT STRAPS ARE TO BE PROVIDED TO ALL EXTERNAL WALLS AT A MAXIMUM SPACING OF 1.5m.
- WALL PLATES ARE TO BE FIXED DOWN TO WALLS USING PROPRIETARY GALVANISED STEEL STRAPS AT A MAXIMUM OF 1.25m CENTRES.

STRUCTURAL DESIGN LEGEND:

	MOVEMENT JOINT		BEAM / LINTEL / TRIMMER / GIRDER TRUSS OVER
	CLASS B ENGINEERING BRICK		9mm OSB SHEATHING
	PADSTONES 440 x 215 x 100mm		

GROUND FLOOR PLAN
GIA 94.1m²

FIRST FLOOR PLAN

- Rev. D. Windows elevational openers, and external doors amended in accordance with schedule. 08.08.24
- C. Kitchen details updated. D6 moved upwards to accommodate Part M requirements. 29.07.24
- B. Updated to suit first floor joists. Structural engineer details updated. 27.06.24
- A. Updated to structural engineers details. 22.05.24

ROSE

CLIENT	Eastlight Community Homes Limited
PROJECT	Whatfield Road, Elmsett, Ipswich, Suffolk
DRAWING TITLE	TYPE H FLOOR PLANS NDSS COMPLIANT
PURPOSE OF ISSUE	BUILDING REGULATIONS
JOB NO.	L335
DATE	06.07.23
SCALES	1:50
DRAWN BY	M.R.
CHECKED BY	J.F.
DWG NO.	L335/H.221D
SHEET NO.	1 OF 3
© Copyright Rose Builders Limited	